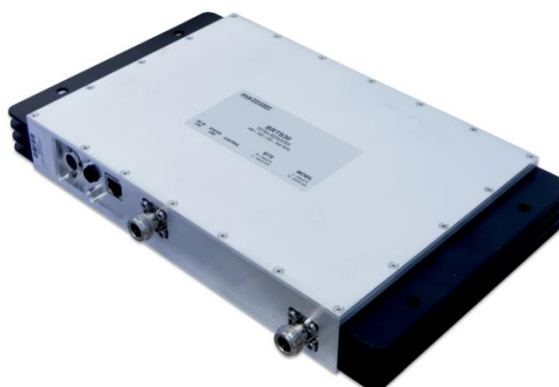


MAIN FEATURES

- ❖ High sensitivity
- ❖ High dynamic range
- ❖ Optional uplink muting
- ❖ Low power consumption
- ❖ Compact size
- ❖ SNMP support



DESCRIPTION

This repeater is intended to be used in 400 MHz indoor TETRA systems. It is a compact and reliable unit which can be effectively used to cover areas that cannot be economically covered by base stations. It is a very economical solution which can be easily installed and can be monitored and controlled locally and remotely via the provided control software.

In order to reduce noise impact on the base station side, uplink muting functionality is available upon customer request.

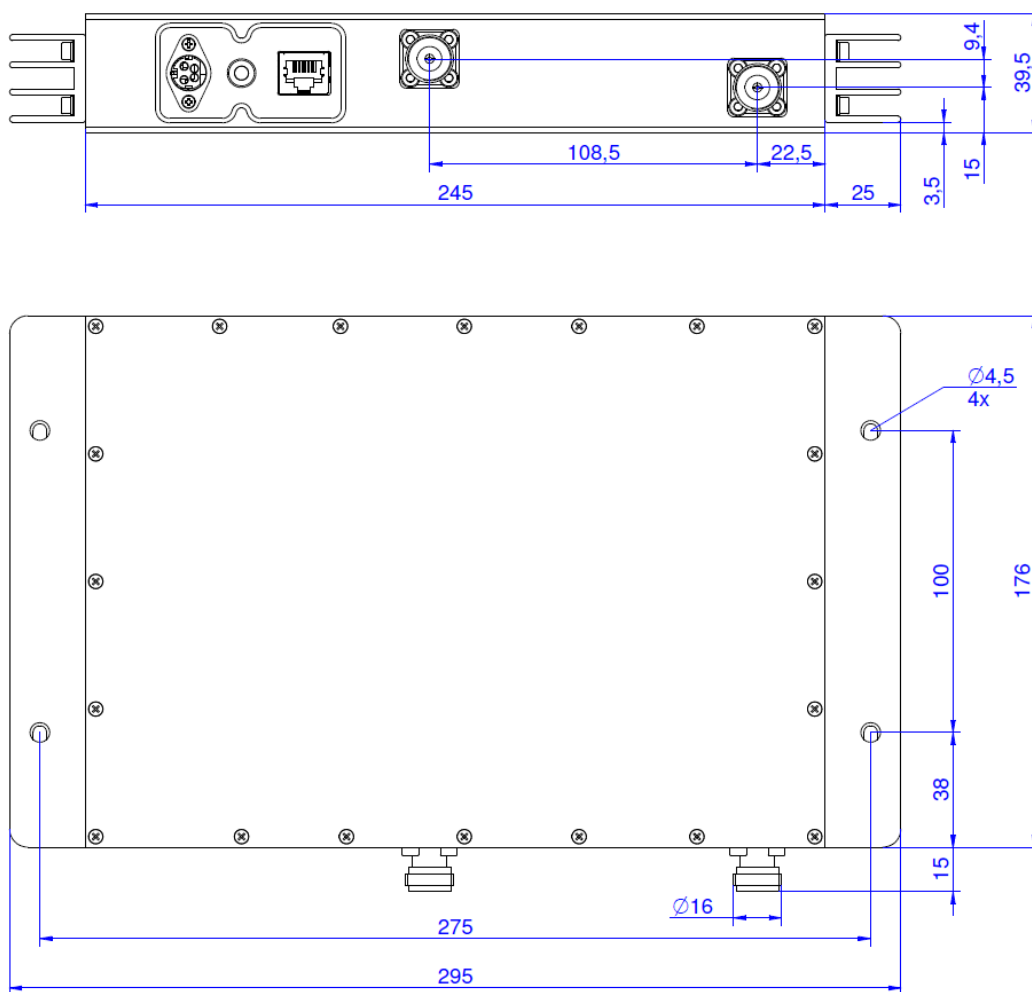
SPECIFICATIONS

ELECTRICAL PARAMETERS	
Frequency band	Downlink: 390 – 395 MHz Uplink: 380 – 385 MHz
Operating frequency bandwidth	5 MHz
Mode of operation	Band selective duplex
Linear output power	Downlink: +18 dBm or 2 x 15 dBm (2 carriers) meets ETSI regulation Uplink: +18 dBm or 2 x 15 dBm (2 carriers) meets ETSI regulation
ICP3	Downlink: +45 dBm minimum @ 2 x 15 dBm Uplink: +45 dBm minimum @ 2 x 15 dBm
ACPR	60 dB @ linear output power
Nominal gain	70 dB
Gain setting range	70 to 40 dB adjustable in 1 dB steps
Gain ripple	<±1.5 dB typical
Gain stability	<±2.0 dB (within operating temperature range)
Uplink input noise figure	<6 dB @ maximum gain
Harmonics	According to the ETSI regulation
Spurious radiation	According to the ETSI regulation
Local leakage	According to the ETSI regulation
EVM	<1% typ. (ETSI regulation <10%)
Power supply voltage	100 – 250 VAC, 50 – 60 Hz with external AC/DC power supply
Power consumption	<20 W
MECHANICAL PARAMETERS	
Type of external power supply	GST40A07-R7B; MEAN WELL
External power supply plug	Type F plug
Type of RF connectors	N – female
Number of RF connectors	2, MOBILE, DONOR
Weight	<3 kg
Dimension	295 x 176 x 40 mm (see outline dimensions)

ENVIRONMENTAL PARAMETERS	
Operating temperature range	0 °C ... +45 °C
Storage temperature range	-30 °C ... +70 °C
Cooling	Convection
Degree of protection	IP42 Indoor
SOFTWARE PARAMETERS	
Wired control	Ethernet (SNMP v1 / v2c)
Alarm I/O	SNMP notifications, status LED
Wireless control (optional)	2G / 4G modem
DC POWER SUPPLY, LOCAL CONTROL CONNECTOR AND STATUS LED ARRANGEMENT	

Specifications are subject to change without notice.

OUTLINE DRAWING (mm)





BRTS30/31/32 400 MHz Band Selective TETRA Pico Repeater

ORDERING INFORMATION

MODEL NUMBER	FREQUENCY BAND	UL-MUTING	MODEM	SEPARATED MODEM PORT
BRTS30K10672	380-385 MHz / 390-395 MHz			
BRTS30K10836	455-460 MHz / 465-470 MHz			
BRTS30K10891	450-455 MHz / 460-465 MHz			
BRTS30K10981	380-385 MHz / 390-395 MHz	✓		
BRTS30K11016	415-420 MHz / 425-430 MHz			
BRTS30K11224	410-415 MHz / 420-425 MHz			
BRTS31K10674	380-385 MHz / 390-395 MHz		✓	
BRTS31K10678	380-385 MHz / 390-395 MHz	✓	✓	
BRTS31K10989	415-420 MHz / 425-430 MHz		✓	
BRTS31K11178	450-455 MHz / 460-465 MHz		✓	
BRTS32K10675	380-385 MHz / 390-395 MHz		✓	✓

DOCUMENT REVISION

DOCUMENT NAME	REVISION	DATE
BRTS3x	V01	2023-03-30