

Maven digital DAS EMEA-APAC

Nimbus quad band low power

Datasheet version 3.4

**Outstanding
Performance**

**End to end
Digital platform**

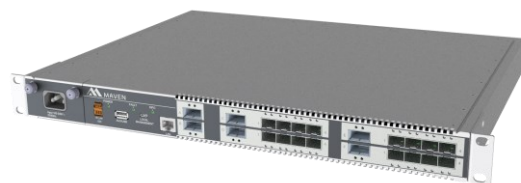
**Always
Future-proof**

**Overall
Cost efficiency**

**More
Sustainable**

Maven Wireless offers new solutions for wireless coverage in all parts of the world. Our products are end to end digital and future-proof, comes with the best performance and cost efficiency you can find. We also have high marks on sustainability and a burning passion for making our customers and end-users life safer, better and easier by securing 100% wireless coverage.

**Nimbus remote unit
Helix distribution unit
Nimbus power distribution unit**



Nimbus specification



General

Power supply options	48 VDC (AC local adaptor) or remotely powered (NPDU)
Power consumption	70 W fully loaded
Operating temperature	0 to +55 °C
Ingress protection	IP40
Antenna	4 Integrated antennas for MIMO and/or SISO
Digital Interface	SFP+, 1 x SFP28 or 2 x SFP28.
Number of bands	up to 4 bands in one enclosure

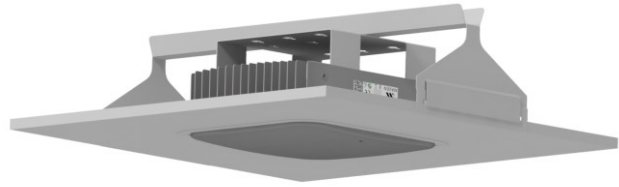
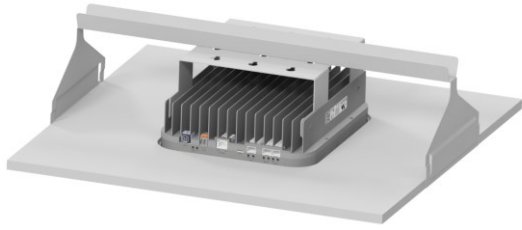
RF parameters

Output power	+23 dBm per band
Noise figure	6 dB typical at max gain

Band	Uplink	Downlink	Operation bandwidth	Composite output power	Technologies
700	703 – 748	758 – 803	45 MHz	+ 23 dBm	LTE, 5G NR
800	832 – 862	791 – 821	30 MHz	+ 23 dBm	LTE, 5G NR
900	880 – 915	925 - 960	35 MHz	+ 23 dBm	GSM(**), WCDMA, LTE, 5G NR
1800	1710 – 1785	1805 – 1880	75 MHz	+ 23 dBm	GSM(**), WCDMA, LTE, 5G NR
2100	1920 – 1980	2110 – 2170	60 MHz	+ 23 dBm	WCDMA, LTE, 5G NR
2600	2500 – 2570	2620 – 2690	70 MHz	+ 23 dBm	LTE, 5G NR
2300 TDD	2300 – 2400		100 MHz	+ 23 dBm	LTE, 5G NR
2600 TDD	2500 - 2700		100 MHz	+ 23 dBm	LTE, 5G NR
C-Band	3400 - 3800		400 MHz	+ 23 dBm	5G NR
n78	3300 – 3800		500 MHz	+23 dBm	5G NR

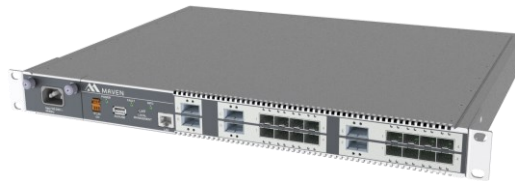
Mechanical

Dimensions (height, width, depth)	(102 unmounted, 148 mounted) x 246 x 285 mm
Weight	max 5 kg
Colour	RAL 9016 Matt



The nimbus can be either wall mounted, or ceiling mounted (above pictures). It can also be mounted above the ceiling tile.

Helix specification



General

Power supply options	85 – 264 VAC, redundant, Hot swappable optional -72 – -36 VDC, redundant, Hot swappable
Power consumption	180 W max fully loaded
Management	Ethernet 10/100/1000 Micro USB Standard USB accessory connector Summary alarm output (NC/NO)
Operating temperature	+5 to +45 °C
Digital input/output	2x QSFP+
Digital out to remotes	16 SFP+ or 8x SFP28

Mechanical

Dimensions (height, width, depth)	43 x 436 x 350 mm in standard 19" rack format
Weight	< 5 kg

Nimbus Power Distribution Unit (NPDU)



General

Power supply options	85 – 264 VAC, redundant, Hot swappable optional -72 – -36 VDC
Power consumption	1500 W max fully loaded
Management	Ethernet 10/100/1000 Micro USB
Operating temperature	+5 to +45 °C
DC Supply	16 ports DC IEEE 802bt type 4 class 8 standard over 2-wire (max 90 W)

Mechanical

Dimensions (height, width, depth)	43 x 436 x 350 mm in standard 19" rack format
Weight	< 5 kg

Helix 16x SFP+



Helix 8x SFP28



Nimbus Power Distribution Unit

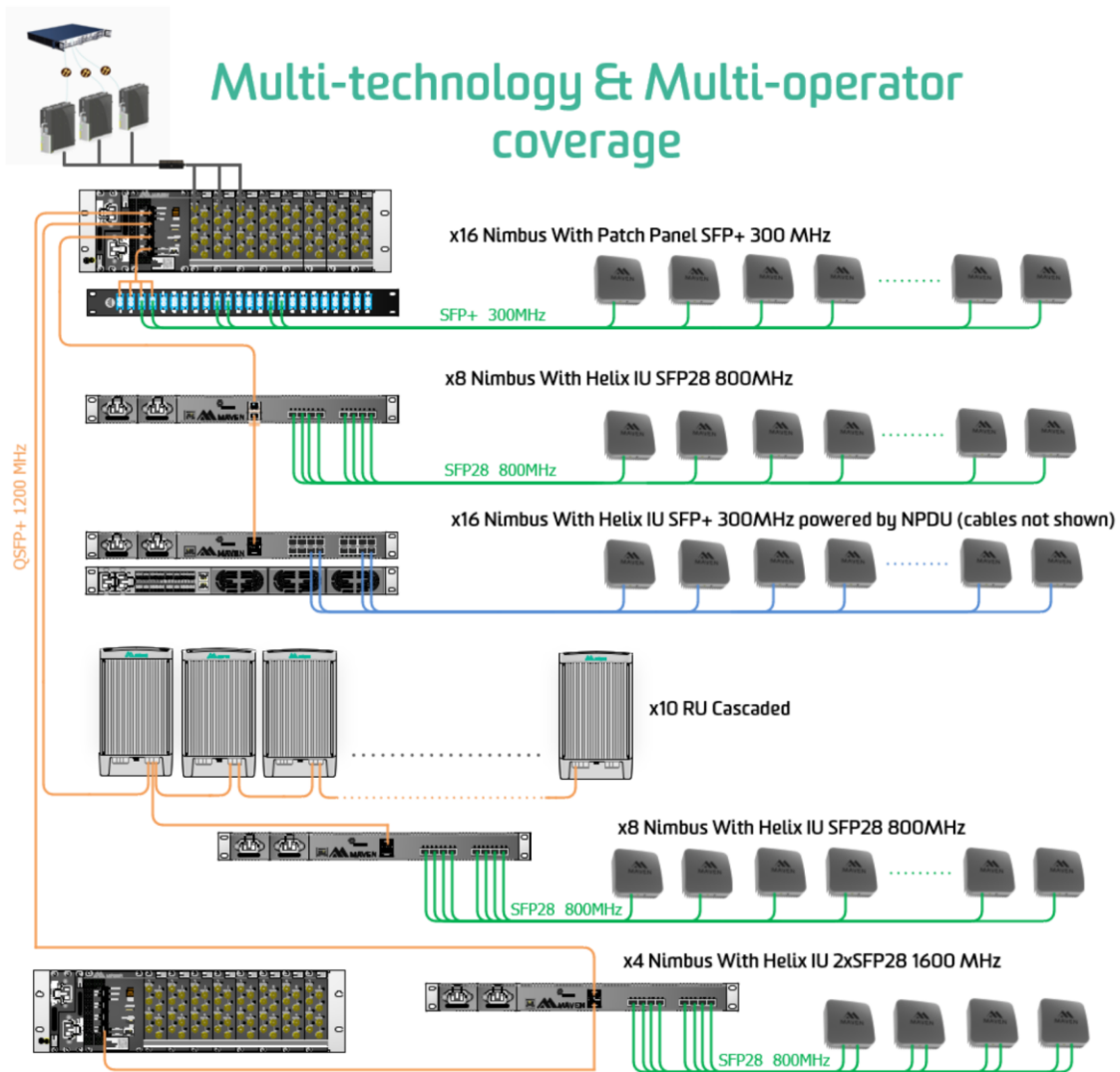


Only VAC models depicted above, VDC interfaces also available.

Standards & approvals

EMC & safety	Low voltage directive 73/23/EEC
EMC directive 2004/108/EC	RED directive 2014/53/EU

Multi-technology & Multi-operator coverage



Various frequency combinations in the same enclosure are available. Contact Maven Wireless for more information. All parameters are subject to change.