

# Maven Digital DAS EMEA-APAC

## Nimbus Quad Band Low Power

Data sheet version 1.0

1

### **Fiber-to-the-edge**

The Nimbus supports 4G and 5G in one box, without passive cabling or components

2

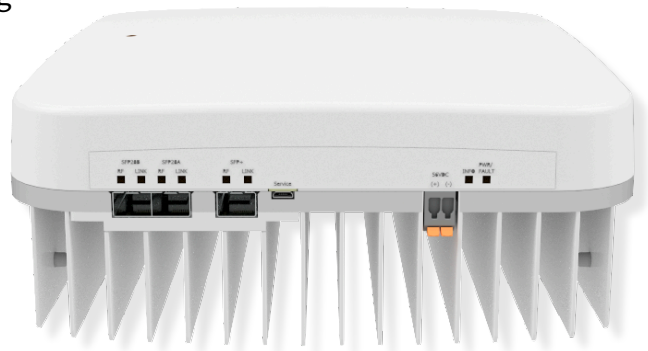
### **MIMO 4x4**

Offers 4x4 MIMO on both public and private 5G bands  
- simultaneously

3

### **High capacity fiber link**

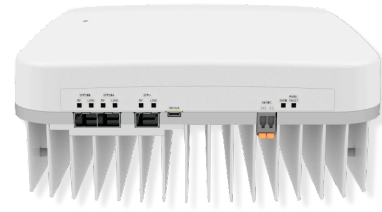
The latest in high-bandwidth data links - up to 1600 MHz or 50 Gbps



Maven Wireless offers cutting-edge, end-to-end digital solutions for global wireless coverage. Our products are future-proof, highly efficient, and cost-effective. We're committed to sustainability and passionate about improving lives by ensuring 100% reliable wireless coverage, anywhere in the world.

# Product specification

## Nimbus quad-band remote



### General

<b>Mains power</b>	48 VDC (local AC adaptor) or remotely powered (NPDU)
<b>Power consumption</b>	70 W fully loaded
<b>Operating temperature</b>	0 to +55 °C
<b>Ingress protection</b>	IP40
<b>Antennas</b>	4 Integrated antennas for MIMO and/or SISO
<b>Digital interfaces</b>	SFP+ or 2 x SFP28
<b>Number of bands</b>	Up to 4 bands per unit

### RF Parameters

<b>Output power</b>	+23 dBm per band above 3 GHz +20 dBm per band below 3 GHz
<b>Noise figure</b>	6 dB typical at max gain

Band <sup>1</sup>	Uplink	Downlink	Operation Bandwidth	Composite Output power	Technologies
700	703 – 748	758 – 803	45 MHz	+ 20 dBm	LTE, 5G NR
800	832 – 862	791 – 821	30 MHz	+ 20 dBm	LTE, 5G NR
900	880 – 915	925 – 960	35 MHz	+ 20 dBm	GSM(**), WCDMA, LTE,

<sup>1</sup> Various frequency combinations in the same enclosure are available. Contact Maven Wireless for more information.

					5G, NR
1800	1710 – 1785	1805 – 1880	75 MHz	+ 20 dBm	GSM(**), WCDMA, LTE, 5G NR
2100	1920 – 1980	2110 – 2170	60 MHz	+ 20 dBm	WCDMA, LTE, 5G NR
2600	2500 – 2570	2620 – 2690	70 MHz	+ 20 dBm	LTE, 5G NR
2300 TDD	2300 – 2400	2300 – 2400	100 MHz	+ 20 dBm	LTE, 5G NR
2600 TDD	2496-2690	2496-2690	100 MHz	+ 20 dBm	LTE, 5G NR
C-Band	3400 - 3800	3400 - 3800	400 MHz	+ 23 dBm	5G NR
n78	3300 – 3800	3300 – 3800	500 MHz	+ 23 dBm	5G NR

## Mechanical

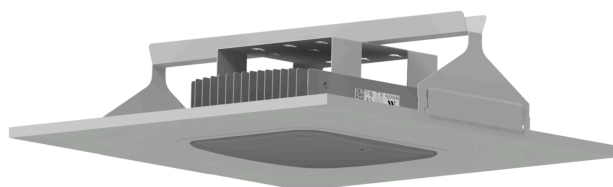
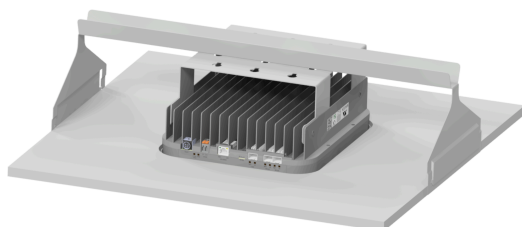
**Dimensions (H x W x D)** (102 unmounted, 148 mounted) x 246 x 285 mm

**Weight** 5 kg

**Colour** RAL 9016 matt

### Installation in ceiling tiles

The nimbus can be either wall mounted, or ceiling mounted. The pictures below show installation in a ceiling tile with the use of the ceiling bracket. It can also be mounted above the ceiling tile, using the same bracket.



### **Nimbus variations and related components**

Nimbus can be provided in various combinations, depending on your needs. For instance:

- A 4x4 MIMO version for C-band supporting all public operators as well as private bands
- A combination of 2 SISO bands on 4G and 2x2 MIMO on C-band
- A pure 4G version with SISO on 4 different bands

The Nimbus units are part of the Maven digital DAS solution and connect to the head-ends, like the Orion and Cirrus units via a Helix fiber distribution unit (see separate datasheet). Power is provided locally, or from a central power distribution unit, NPDU (see separate datasheet).

Note: All parameters are subject to change.