

# Maven Digital Repeater EMEA-APAC

## Tropo Low Power Cellular Repeater

Data sheet version 2.3

1.

### **Digital Platform**

Dual band supporting all MNOs

2.

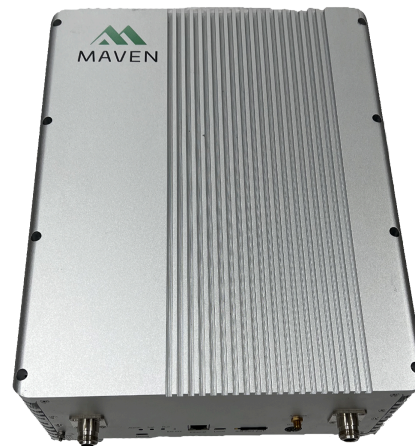
### **Future-proof**

Simple integration in Maven NMS

3.

### **Sustainable**

Quick and easy deployments

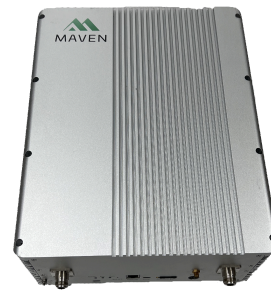


Maven Wireless offers cutting-edge, end-to-end digital solutions for global wireless coverage. Our products are future-proof, highly efficient, and cost-effective. We're committed to sustainability and passionate about improving lives by ensuring 100% reliable wireless coverage, anywhere in the world.

# Product specification

## Tropo

### General



<b>Mains power</b>	100 - 240 VAC
<b>Power consumption</b>	55 W max fully loaded
<b>Management</b>	Ethernet
<b>Remote access</b>	4G modem
<b>Operating temperature</b>	-25 to +55 °C
<b>Ingress protection</b>	IIP40
<b>RF interface</b>	2 bands in one enclosure
<b>Antenna port</b>	N-type or 4.3/10 per request
<b>Automatic Gain control</b>	> 51 dB
<b>MGC (Step Attenuation)</b>	> 31 dB / 1 dB step
<b>Gain flatness</b>	Typical < 3-6 dB
<b>Gain UL/DL</b>	65 / 70 dB
<b>Group Delay – GSM/UMTS</b>	< 7 us
<b>Group Delay – LTE</b>	< 4.7 us

## RF Parameters

<b>DL Output power</b>	+18 dBm per band	
<b>UL Output power</b>	+17 dBm per band	
<b>Frequencies<sup>1</sup></b>	<b>Uplink (MHz)</b>	<b>Downlink (MHz)</b>
	703 – 733	758 – 788
	832 – 862	791 – 821
	880 – 915	925 – 960
	1710 – 1785	1805 – 1880
	1920 – 1980	2110 – 2170
	2500 – 2570	2620 – 2690

## Mechanical

<b>Dimensions (height, width, depth)</b>	280 x 350 x 101 mm
<b>Weight</b>	Max 10 kg

## Standard & Approvals

<b>EMC &amp; safety</b>	Low voltage directive 73/23/EEC
<b>EMC directive 2004/108/EC</b>	R&TTE directive 1999/5/EC

<sup>1</sup> Various frequency combinations in the same enclosure are available. Contact Maven Wireless for more information. Note: All parameters are subject to change.