

# Maven Digital Repeater EMEA-APAC

## Tropo Low Power Repeater for Critical Comms

Data sheet version 3.1

1.

### Digital Platform

Supporting TETRA bands in UHF

2.

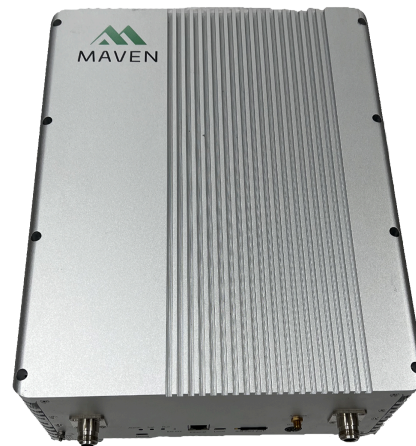
### Future-proof

Simple integration in Maven NMS

3.

### Sustainable

Quick and easy deployments

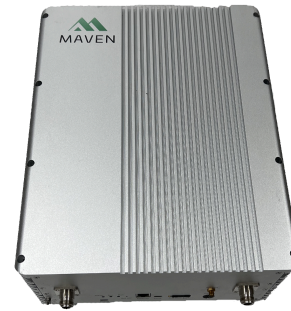


Maven Wireless offers cutting-edge, end-to-end digital solutions for global wireless coverage. Our products are future-proof, highly efficient, and cost-effective. We're committed to sustainability and passionate about improving lives by ensuring 100% reliable wireless coverage, anywhere in the world.

# Product specification

## Tropo

### General



<b>Mains power</b>	100 - 240 VAC
<b>Power consumption</b>	50 W max fully loaded
<b>Management</b>	Ethernet
<b>Remote access</b>	4G modem
<b>Operating temperature</b>	-25 to +55 °C
<b>Ingress protection</b>	IP40
<b>Antenna port</b>	N-type F
<b>Automatic Gain control</b>	> 51 dB
<b>MGC (Step Attenuation)</b>	1 dB pp
<b>Gain flatness</b>	< 3 dB at max gain
<b>Gain UL/DL</b>	Max 67 dB
<b>Group Delay</b>	< 14.5 us
<b>Noise figure</b>	5 dB
<b>Number of digital filters</b>	4 filters using 25kHz-250k filter bandwidths 2 filters using 200KHz-5MHz filter bandwidths
<b>Filter bandwidth</b>	25 kHz to 6,5 MHz
<b>VSWR</b>	< 2

## RF Parameters

**DL Output power** +19 dBm per band

**UL Output power** +19 dBm per band

Band	Uplink (MHz)	Downlink (MHz)	Operation Bandwidth	Composite Output power	Technologies
400	380-385	390-395	5 MHz	+19	TETRA TMO
400	Other frequencies available upon request		5 MHz	+19	TETRA TMO

## Mechanical

**Dimensions (height, width, depth)** 280 x 350 x 154 mm

**Weight** Max 15 kg (indoor)

## Standard & Approvals

**EMC & safety** Low voltage directive 73/23/EEC

**EMC directive 2004/108/EC** R&TTE directive 1999/5/EC

Contact Maven Wireless for more information.

Note: All parameters are subject to change.